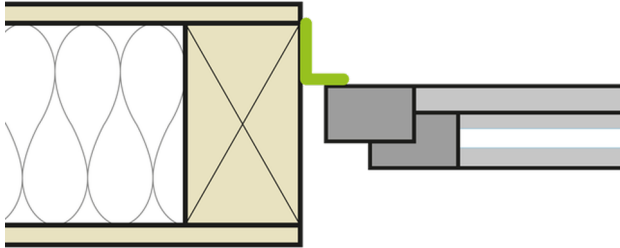


Installation instructions **CONTEGA[®]EXO**

Installation steps: 1. Timber frame construction



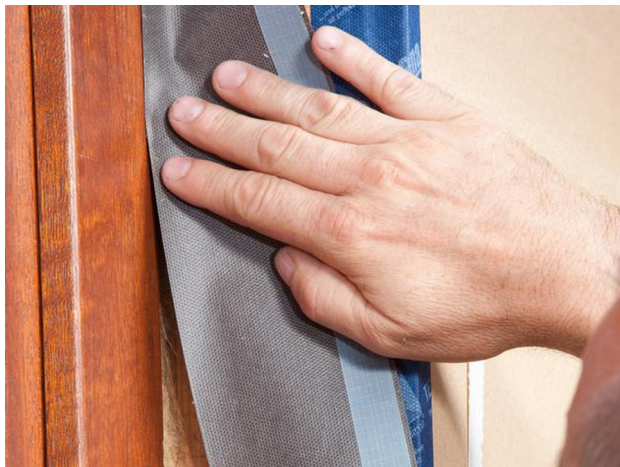
schematic diagram

If the window has already been installed, CONTEGA EXO is stuck to the frame.



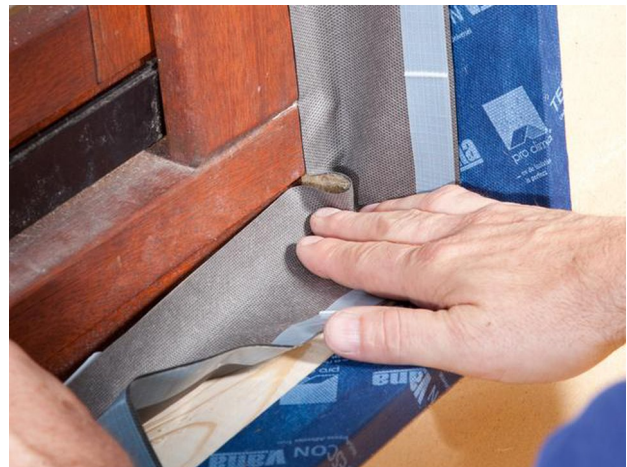
1. Remove the inner backing paper

Remove one of the backing paper strips on the membrane side (smooth side).



2. Stick to frame

Place the full width of the adhesive strip of the CONTEGA EXO onto the frame and stick the first soffit side.



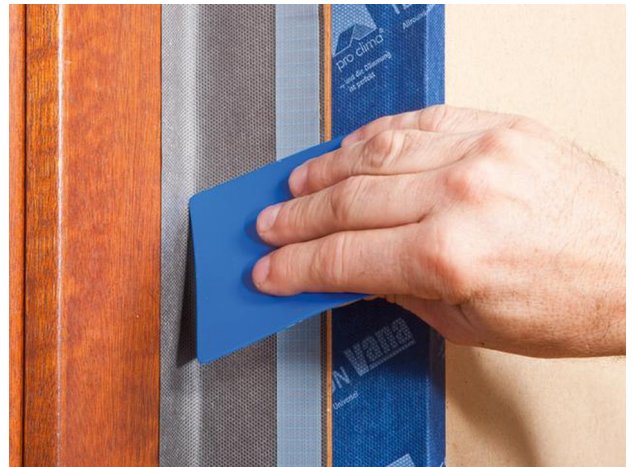
3. Formation of corner

Fold the tape in the corner area.
Ensure that there is uninterrupted windtightness at the window.
Then continue sticking around the rest of the frame.
When finished, cut the tape with approx. 5 cm of an overlap.



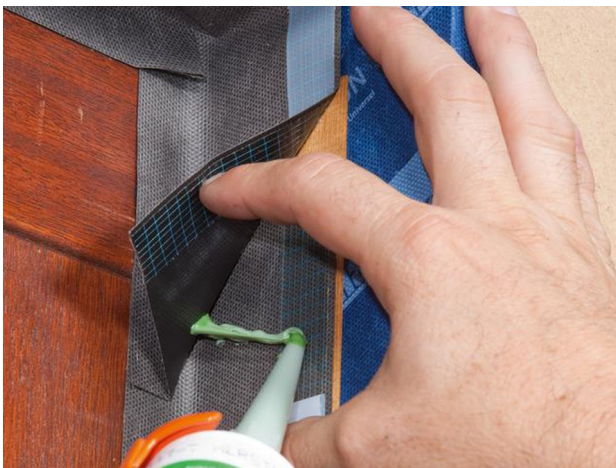
4. Stick to the soffit

Remove the second strip of backing paper from the smooth membrane side and stick the CONTEGA EXO all around the soffit.



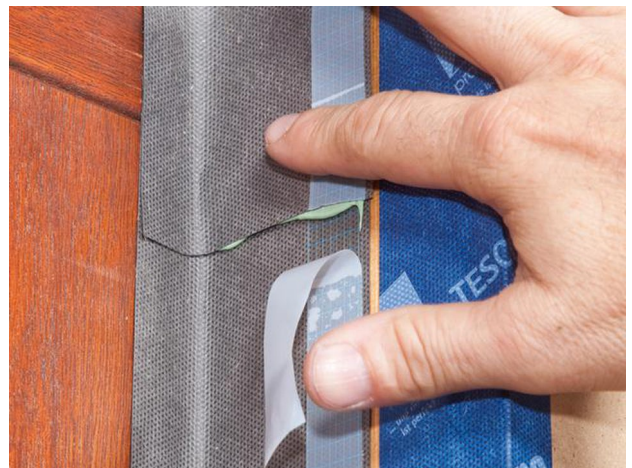
5. Press firmly to secure the CONTEGA EXO in place

Rub tape firmly into place using the pro clima PRESSFIX.



6. Stick the ends

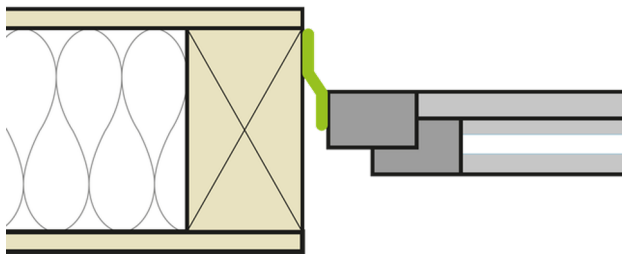
Remove outer backing paper from the bottom tape.
Apply a line (approx. 5 mm thick) of ORCON F joint adhesive between the overlapping ends of the tape.
Place the tape onto the adhesive.



7. Stick the ends

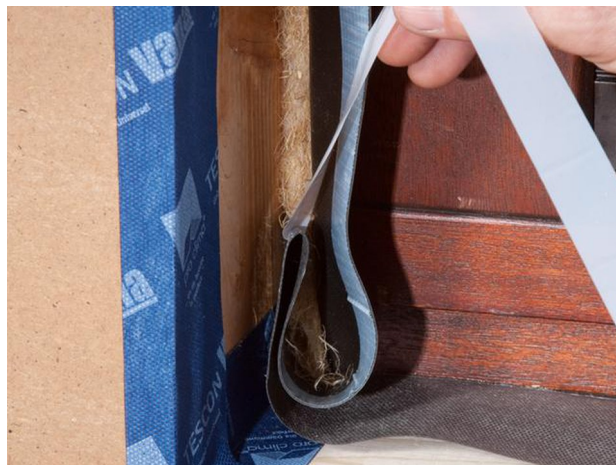
Do not press the adhesive completely flat so as to allow for relative motion between components.
You're finished!

Installation steps: 2. Timber frame construction



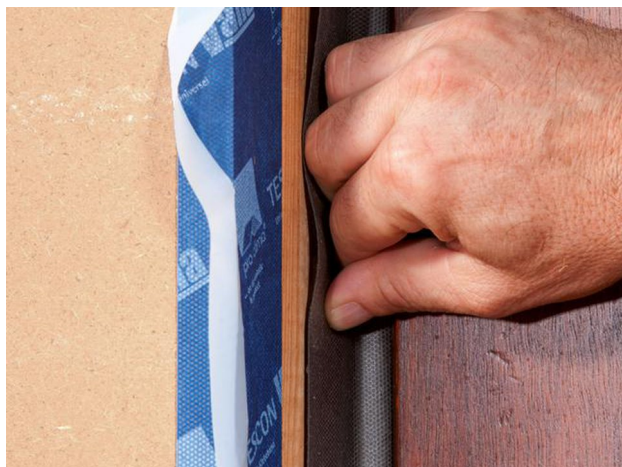
schematic diagram

CONTEGA EXO has already been installed to the side of the window – for example, by the window installation.



1. Formation of corner

Fold the tape in the corner area.
Remove the backing paper in the corner area and stick the tapes to one another.
Ensure that there is uninterrupted windtightness for the joint between the tapes.



2. Stick to the soffit

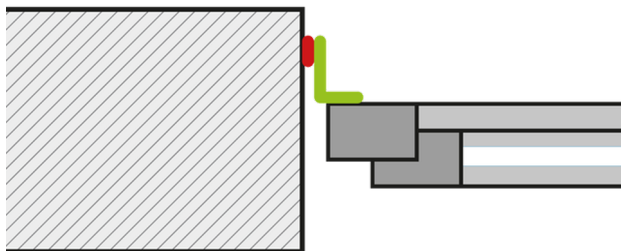
Remove the strip of backing paper from the smooth membrane side and stick the tape all around the soffit in an airtight manner.



3. Stick the ends

Apply an approx. 5 mm thick line of ORCON F joint adhesive between the overlapping ends of the tape.
Place the tape onto the adhesive.
Do not press the adhesive completely flat so as to allow for relative motion between components.

Installation steps: 3. Masonry construction



schematic diagram

If the window has already been installed, CONTEGAEXO is stuck to the frame.



1. Stick to frame

Remove one of the backing paper strips on the smooth membrane side. Place the full width of the adhesive strip of the tape onto the frame and stick the first soffit side.



2. Remove the inner backing paper

Remove the inner strip of backing paper on the first soffit side as far as the first corner.



3. Formation of corner

Fold the tape in the corner area. Ensure that there is uninterrupted windtightness at the window. Then continue sticking around the rest of the frame. When finished, cut the tape with approx. 5 cm of an overlap.



4. Apply adhesive to entire surface

Apply an approx. 5 mm thick line (more in the case of rough joint subsurfaces, if necessary) of ORCON F joint adhesive to the soffit of zig-zag pattern.



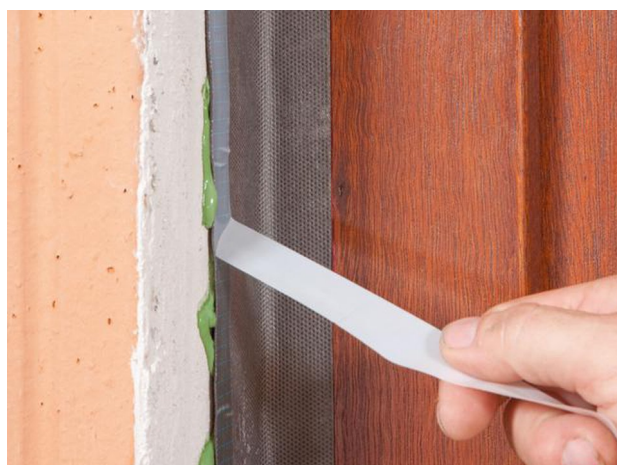
5. Place the tape onto the adhesive

Remove the inner backingpaper all the way around.
 Note: ORCON F do not stick to the backing paper.
 Place the tape onto the adhesive.
 Do not press the adhesive completely flat so as to allow for relative motion between components.



6. Stick the ends

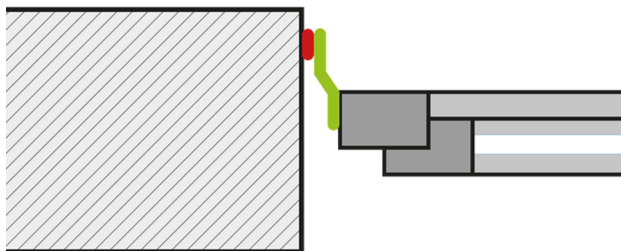
Remove outer backing paper from the bottom tape.
 Apply a line (approx. 5 mm thick) of ORCON F joint adhesive between the overlapping ends of the tape.
 Place the tape onto the adhesive.
 Do not press the adhesive completely flat so as to allow for relative motion between components.



7. Remove the outer backing paper

Remove the outer strip of backing paper (on the fleece side) all the way around.
 Note: plaster will not adhere to the backing paper.
 You're now ready for plastering!

Installation steps: 4. Masonry construction



schematic diagram

CONTEGA EXO has already been installed to the side of the window - for example, by the window installation technician.



1. Apply adhesive to entire surface

Apply an approx. 5 mm thick line (more in the case of rough substraces, if necessary) of ORCON F joint adhesive to the soffit in a zig-zag pattern.



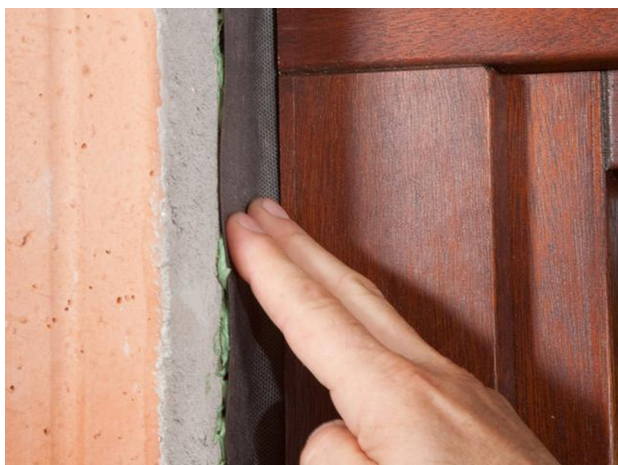
2. Remove the inner backing paper

Remove the strip of backing paper from the non-printed side of the membrane and place the tape onto the adhesive.
 Note: ORCON F do not stick to the backing paper.
 Do not press the adhesive completely flat so as to allow for relative motion between components.



3. Formation of corner

Fold the tape in the corner area.
 Remove the backing paper in the corner area and stick the tapes to one another.
 Ensure that there is uninterrupted airtightness for the joint between the tapes.



4. Place the tape onto the adhesive

Place the tape onto the adhesive.



5. Stick the ends

Apply an approx. 5 mm thick line of ORCON F joint adhesive between the overlapping ends of the tape.
Place the tape onto the adhesive.
Do not press the adhesive completely flat so as to allow for relative motion between components.



6. Stick the corners

Stick the folded corners together using ORCON F.
The tape can then be plastered over more easily later on.



7. You're finished!

The wind-proof sealing is now complete,
and the tape can be plastered over.

Substrates

Clean subsurfaces before sticking.

Adhesion to frozen surfaces is not possible. There must be no water-repellent substances (e.g. grease or silicone) on materials to be bonded.

The width of the adhesive tape that is to be plastered over should generally not exceed 60 mm (2 3/8") or 50% of the soffit area. Detailed recommendations can be obtained from the relevant plaster producer.

Subsurfaces must be sufficiently dry and stable.

Permanent adhesion is achieved on all pro clima exterior membranes and on other underlay and wall lining membranes (e.g. those made of PP and PET).

Adhesion can be carried out on planed and painted wood, hard plastics, hard wood-based panels (chipboard, OSB and plywood panels).

For bonding joints on masonry or concrete or on rough substrates, use ORCON F.

The best results in terms of structural stability are achieved on high-quality subsurfaces.

It is your responsibility to check the suitability of the subsurface; adhesion tests are recommended in certain cases.

Pretreatment with TESCON PRIMER is recommended in the case of subsurfaces with insufficient stability.

General conditions

The bonds should not be subjected to tensile strain.

Press firmly to secure the adhesive tapes in place. Ensure that there is sufficient resistance pressure.

Seals that are windproof and resistant to driving rain can only be achieved if the sealing tape is installed free of folds and breaks.

When plastering, please observe the recommendations of the plaster manufacturer for non-absorbent subsurfaces. A bonding course may be necessary.

The information provided here is based on practical experience and the current state of knowledge. We reserve the right to make changes to the recommended designs and processing or to make alterations due to technical developments and associated improvements in the quality of our products. We would be happy to inform you of the current technical state of the art at the time you use our products.

Further information about the application and construction can be found in the pro clima planning documentation. For queries please call the pro clima technical hotline on +49 (0)6202 278245.

MOLL
bauökologische Produkte GmbH
Rheintalstraße 35 - 43
D-68723 Schwetzingen
Fon: +49 (0) 62 02 - 27 82.0
eMail: info@proclima.de