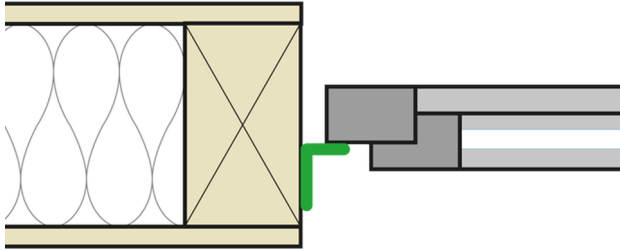


Installation instructions **CONTEGA[®]SL**

Installation steps: 1. Timber frame construction



schematic diagram

If the window has already been installed, SL is stuck to the frame.



1a. Remove the inner backing paper

Remove one of the backing paper strips on the membrane side (smooth side).



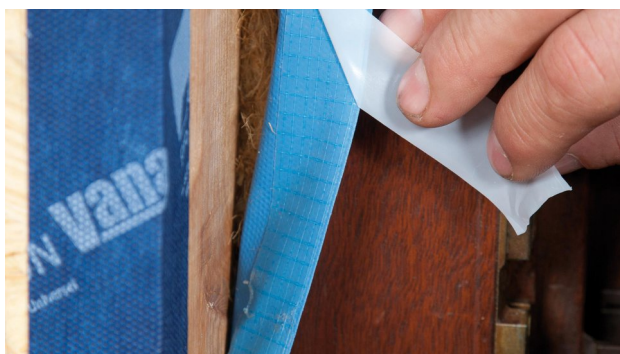
1b. Stick to frame

Place the full width of the adhesive strip of the tape onto the frame and stick the first soffit side.



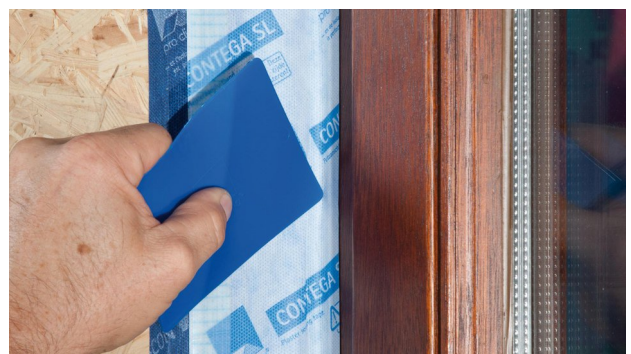
1c. Fold the corner

Fold the tape in the corner area. Ensure that there is uninterrupted windtightness at the window. Then continue sticking around the rest of the frame. When finished, cut the tape with approx. 5 cm of an overlap.



1d. Stick to the soffit

Remove the second strip of backing paper from the smooth membrane side and stick the tape all around the soffit.



1e. Press firmly to secure the tape in place

Press the tape onto the soffit and frame to secure it. This work can be carried out more efficiently and in a manner that is kinder to your hands by using the pro clima PRESSFIX application tool.



1f. Stick the ends

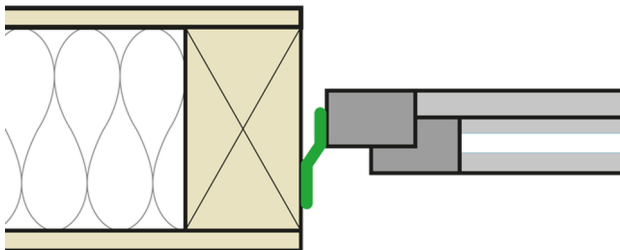
In the sticking area at the ends, remove the backing paper from the fleece side approx. 4 cm to the left and right of the joint.



1g. Stick the ends

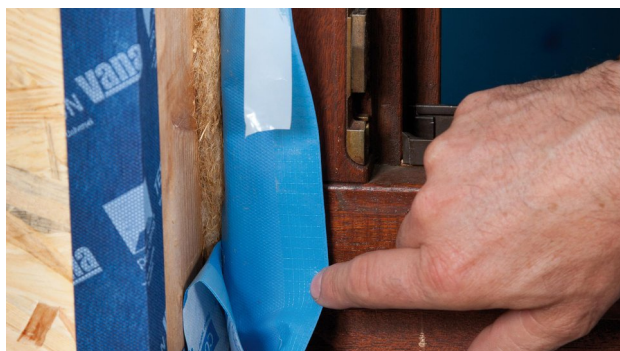
Stick the overlap joint of CONTEGA SL with a short piece of TESCON VANA all-round adhesive tape. Rub all stuck joints to secure them. You're finished!

Installation steps: 2. Timber frame construction



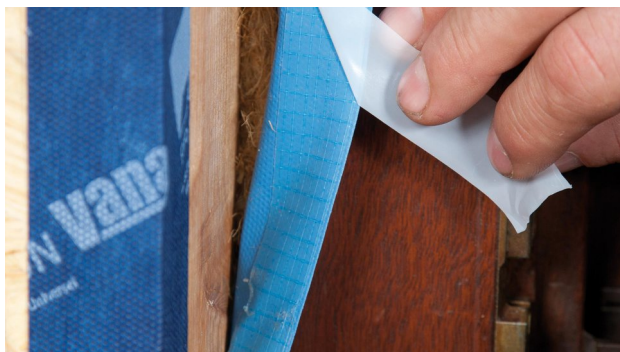
schematic diagram

CONTEGA SL has already been installed to the side of the window – for example, by the window installation.



2a. Fold the corner

Fold the tape in the corner area. Remove the backing paper in the corner area and stick the tapes to one another. Ensure that there is uninterrupted windtightness for the joint between the tapes.



2b. Stick to the soffit

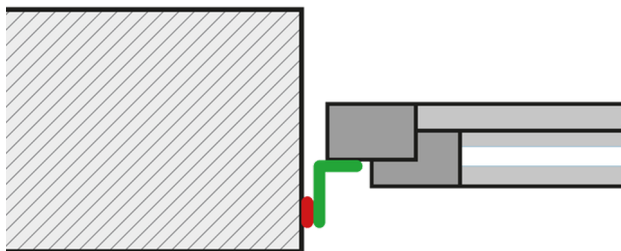
Remove the strip of backing paper from the smooth membrane side and stick the tape all around the soffit in an airtight manner.



2c. Stick the ends

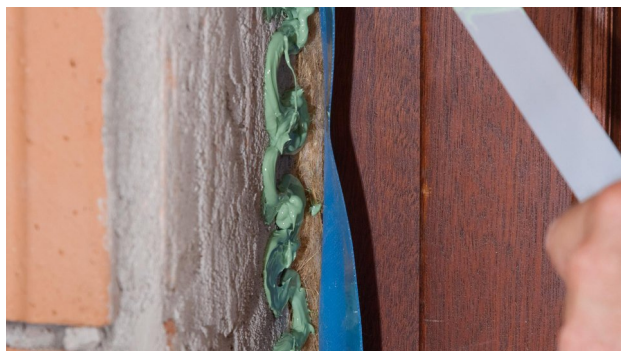
Apply an approx. 5 mm thick line of ORCON F joint adhesive between the overlapping ends of the tape. Place the tape onto the adhesive. Do not press the adhesive completely flat so as to allow for relative motion between components.

Installation steps: 3. Masonry construction



schematic diagram

If the window has already been installed, CONTEAG SL is stuck to the frame.



3b. Remove the inner backing paper

Remove the inner strip of backing paper on the first soffit side as far as the first corner.



3d. Apply adhesive to entire surface

Apply an approx. 5 mm thick line (more in the case of rough joint subsurfaces, if necessary) of ORCON F joint adhesive to the soffit in a zig-zag pattern.



3a. Stick to frame

Remove one of the backing paper strips on the smooth membrane side. Place the full width of the adhesive strip of the tape onto the frame and stick the first soffit side.



3c. Formation of corner

Subsurfaces must have sufficient load-bearing capacity and be dry, level and free of dust, silicone and grease. Brush off subsurfaces; if necessary, clean with a vacuum cleaner and wipe down.



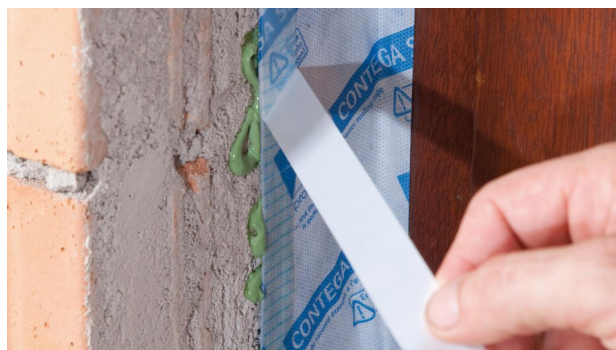
3e. Place the tape onto the adhesive

Remove the inner backing paper all the way around. Note: ORCON F do not stick to the backing paper. Place the tape onto the adhesive. Do not press the adhesive completely flat so as to allow for relative motion between components.



3f. Stick the ends

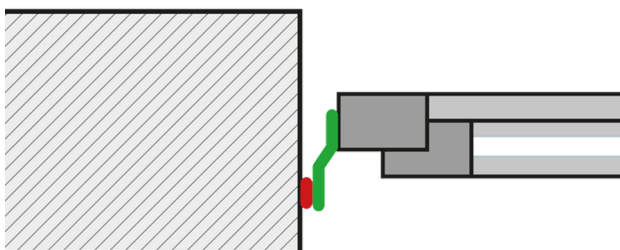
Remove outer backingpaper from the bottom tape.
 Apply a line (approx.5 mm thick) of ORCON F joint adhesive between the overlapping ends of the tape.
 Place the tape onto the adhesive.
 Do not press the adhesive completely flat so as to allow for relative motion between components.



3g. Remove the outer backing paper

Remove the outer strip of backing paper (on the fleece side) all the way around.
 Note: plaster will not adhere to the backing paper.
 You're now ready for plastering!

Installation steps: 4. Masonry construction



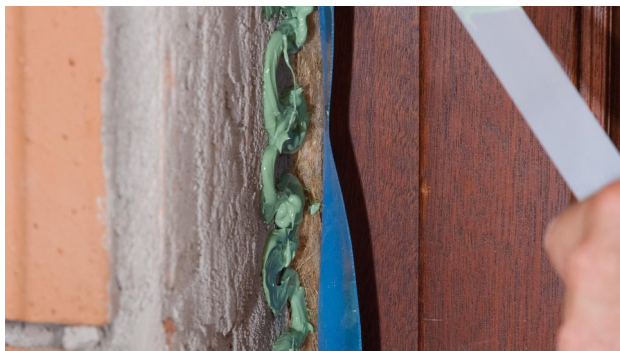
schematic diagram

CONTEGA SL has already been installed to the side of the window - for example, by the window installation technician.



4a. Remove the inner backing paper

Apply an approx. 5 mm thick line (more in the case of rough substrances, if necessary) of ORCON F joint adhesive to the soffit in a zig-zag pattern.



4b. Remove the inner backing paper

Remove the strip of backing paper from the non-printed side of the membrane and place the tape onto the adhesive.
 Note: ORCONF do not stick to the backing paper.
 Do not press the adhesive completely flat so as to allow for relative motion between components.



4c. Formation of corner

Fold the tape in the corner area.
 Remove the backing paper in the corner area and stick the tapes to one another.
 Ensure that there is uninterrupted airtightness for the joint between the tapes.



4d. Place the tape onto the adhesive

Place the tape onto the adhesive.
 Do not press the adhesive completely flat so as to allow for relative motion between components.



4e. Stick the ends

Apply an approx. 5 mm thick line of ORCONF F joint adhesive between the overlapping ends of the tape.
 Place the tape onto the adhesive.
 Do not press the adhesive completely flat so as to allow for relative motion between components.



4f. Stick the corners

Stick the folded corners together using ORCONF F.
 The tape can then be plastered over more easily later on.



4g. You're finished!

The airtight joint is now complete, and the tape can be plastered over.

Substrates

Clean subsurfaces before sticking.

Adhesion to frozen surfaces is not possible. There must be no water-repellent substances (e.g. grease or silicone) on materials to be bonded.

The width of the adhesive tape that is to be plastered over should generally not exceed 60 mm (2 3/8") or 50% of the soffit area. Detailed recommendations can be obtained from the relevant plaster producer.

Subsurfaces must be sufficiently dry and stable.

Permanent adhesion is achieved on all pro clima interior membranes and on other vapour retarder and airtight membranes (e.g. those made of PE, PA, PP and aluminium). Adhesion can be carried out on planed and painted wood, hard plastics, hard wood-based panels (chipboard, OSB and plywood panels).

For bonding joints on masonry or concrete or on rough substrates, use ORCON F.

The best results in terms of structural stability are achieved on high-quality subsurfaces.

It is your responsibility to check the suitability of the subsurface; adhesion tests are recommended in certain cases.

Pretreatment with TESCON PRIMER is recommended in the case of subsurfaces with insufficient stability.

General conditions

The bonds should not be subjected to tensile strain.

Press firmly to secure the adhesive tapes in place. Ensure that there is sufficient resistance pressure.

Airtight seals can only be achieved if the sealing tape is installed free of folds and breaks.

Ventilate continuously and systematically to prevent build-up of excessive humidity; use a dryer if necessary.

When plastering, please observe the recommendations of the plaster manufacturer for non-absorbent subsurfaces. A bonding course may be necessary. If the airtight connection is created straight after plastering, moisture ingress may occur in the thermal insulation or to problems in the order of construction.

The information provided here is based on practical experience and the current state of knowledge. We reserve the right to make changes to the recommended designs and processing or to make alterations due to technical developments and associated improvements in the quality of our products. We would be happy to inform you of the current technical state of the art at the time you use our products.

Further information about the application and construction can be found in the pro clima planning documentation. For queries please call the pro clima technical hotline on +49 (0)6202 278245.

MOLL

bauökologische Produkte GmbH

Rheintalstraße 35 - 43

D-68723 Schwetzingen

Fon: +49 (0) 62 02 - 27 82.0

eMail: info@proclima.de