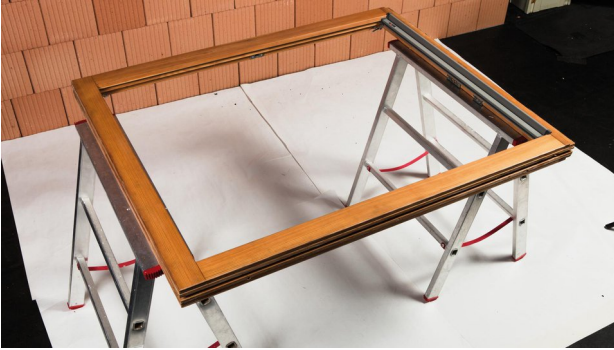


Installation instructions **CONTEGA[®]SOLIDO EXO-D**

Installation steps: 1. Before the window is installed



1. Masonry or timber structure

CONTEGA SOLIDO EXO-D is fitted before the window is installed.
The frame is laid out flat.
The exterior side is facing up.



2. Stick to the side of the frame

Remove the single release film strip on the printed side, position the tape on the side of the frame and then gradually stick in place. The printed side of the tape must be facing the window (upwards) here.
Rub the tape firmly in place using the pro clima PRESSFIX application tool.



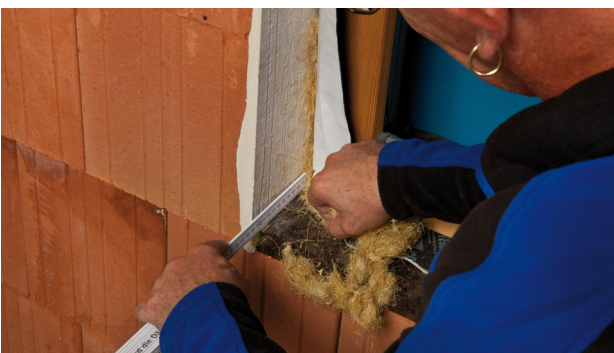
3. Corner finishing

Allow CONTEGA SOLIDO EXO-D to protrude by about 2 cm (7/8") in the corner area (length of the corner diagonal of the joint) and stick it in the form of a corner fold.



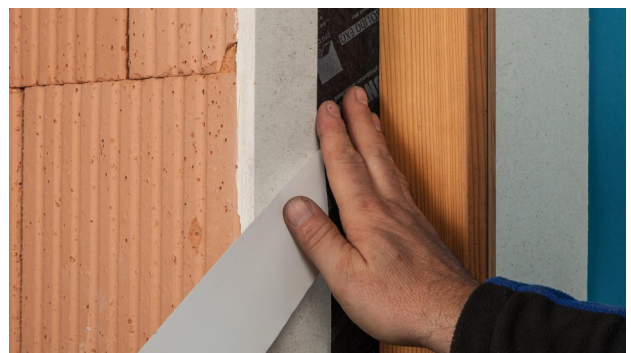
4. Stick the tape to the circumference of the frame

Stick the tape to the side of the frame around its circumference.
When finished, cut the tape with approx. 5 cm (2") of an overlap.
Remove the release film in the overlap area at the start of the tape, which is already fastened in place, and stick the end of the tape in place.
Ensure that there is uninterrupted windtightness when sticking the tape here.



5. Install the window and insulate the joint

Fold in the CONTEGA SOLIDO EXO-D and install the window professionally.
Use a suitable fastening system.
Fill in the joint with a suitable approved insulation material, leaving no cavities.



6. Stick CONTEGA SOLIDO EXO-D in the soffit and rub in place

Remove the release film strip on the membrane side (unprinted side) and gradually stick the tape in place on the soffit.
Leave slack for expansion so as to allow for relative motion between components.
Rub the tape firmly in place using the pro clima PRESSFIX application tool.
Install the sub-sill flashing (EXTOSEAL ENCORS).

Installation steps: 2. Window already installed



1. Window in masonry or timber structure

The window has already been installed; CONTEGA SOLIDO EXO-D is to be installed subsequently.



2. Create a window sill

First create a window sill as a second, waterproof layer using the EXTONSEAL ENCORS sealing adhesive tape.



3. Cut the window sealing tape CONTEGA SOLIDO EXO-D

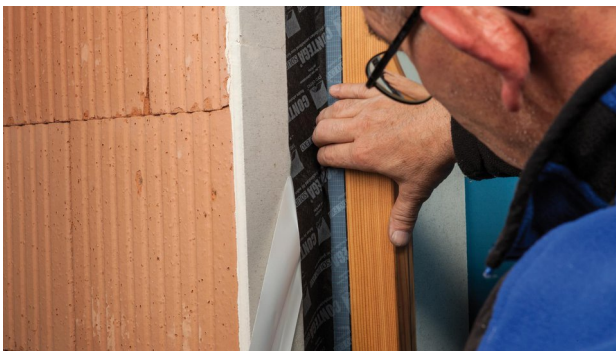
Add approx. 4 cm (1 5/8") to the height of the frame and cut this length of tape.



4. Stick to the frame

Remove approx. 5 - 10 cm (2" - 4") of the narrow release film strip on the membrane side (unprinted side).

Guide the tape around the corner and stick the tape to the circumference of the window.



5. Stick to the soffit allowing for slack

Remove the second (wide) release film strip and gradually stick the tape in place on the soffit.

Start sticking the soffit in the corner area.

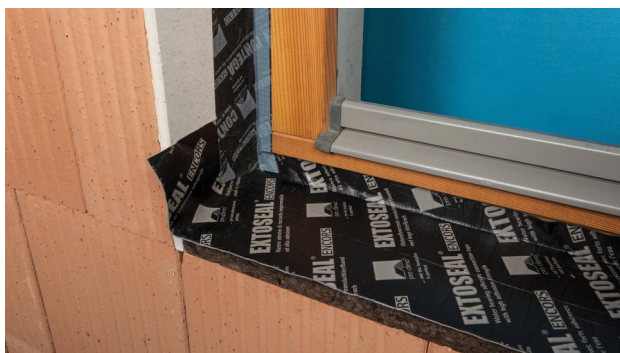
Leave slack for expansion so as to allow for relative motion between components.



6. Sticking the tape to the circumference of the window

Continue sticking the rest of the window (frame and soffit) in the same manner.

Ensure that the corners are stuck over for min. 2 cm (7/8"). The adhesive bond must be airtight all around with no interruptions.



7. Stick to the window sill

Guide CONTEGA SOLIDO EXO-D from the frame and soffit onto the sub-sill flashing and create a windtight, waterproof adhesive bond that is resistant to driving rain here too.



8. Press firmly

Press the tape to the frame and soffit using the pro clima PRESSFIX application tool to secure it.

Tip:

The width of the application tool can be adapted as needed.



9. You're finished!

The joint, which is resistant to driving rain, is now complete, and the tape can be plastered over.

Substrates

Clean substrates before sticking.

Uneven mineral substrates may need to be levelled with a smooth finish.

Adhesion to frozen surfaces is not possible. There must be no water-repellent substances (e.g. grease or silicone) on materials to be bonded.

The width of the adhesive tape that is to be plastered over should generally not exceed 60 mm (2 3/8") or 50% of the soffit area. Detailed recommendations can be obtained from the relevant plaster producer.

Subsurfaces must be sufficiently dry and stable.

Permanent adhesion is achieved on all pro clima exterior membranes and on other underlay and wall lining membranes (e.g. those made of PP and PET).

Adhesion can be carried out on planed and painted wood, hard plastics, hard wood-based panels (chipboard, OSB and plywood panels), metal (e.g. pipes, windows etc.) and on mineral substrates such as concrete and masonry.

The best results in terms of structural stability are achieved on high-quality substrates.

It is your responsibility to check the suitability of the substrate; adhesion tests are recommended in certain cases.

Pretreatment with TESCON PRIMER is recommended in the case of substrates with insufficient stability.

General conditions

The bonds should not be subjected to tensile strain.

Press firmly to secure the adhesive tapes in place. Ensure that there is sufficient resistance pressure.

Seals that are windproof and resistant to driving rain can only be achieved if the sealing tape is installed free of folds and breaks.

When plastering, please observe the recommendations of the plaster manufacturer for non-absorbent substrates. A bonding course may be necessary.

The information provided here is based on practical experience and the current state of knowledge. We reserve the right to make changes to the recommended designs and processing or to make alterations due to technical developments and associated improvements in the quality of our products. We would be happy to inform you of the current technical state of the art at the time you use our products.

Further information about the application and construction can be found in the pro clima planning documentation. For queries please call the pro clima technical hotline on +49 (0)6202 278245.

MOLL**bauökologische Produkte GmbH**

Rheintalstraße 35 - 43

D-68723 Schwetzingen

Fon: +49 (0) 62 02 - 27 82.0

eMail: info@proclima.de