

Installation instructions **CONTEGA[®]** SOLIDO EXO

Installation steps: 1. Before the window is installed



1. Masonry structure

CONTEGA SOLIDO EXO is to be fitted before the window is installed.
The frame is laid out flat.
The exterior side is facing up.



2. Stick to the side of the frame

Remove the narrow backing paper strip, position it on the side of the frame flush with the frame edge and then stick in place.
The printed side of the tape facing up.



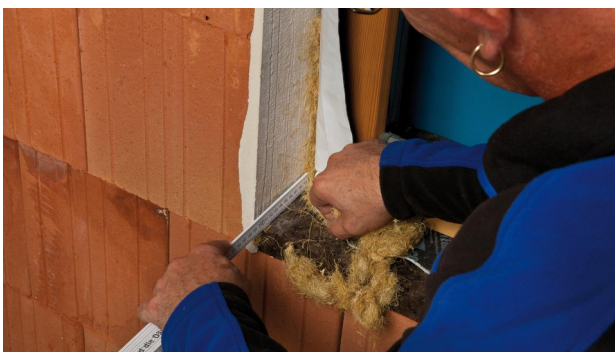
3. Corner finishing

To ensure that the tape can be simply and securely stuck to the window soffit later on, create corner folds as shown here and stick CONTEGA SOLIDO EXO around the circumference.



4. Cut and stick

When finished, cut the tape with approx. 5 cm of an overlap.
Stick the ends to each other on the frame.



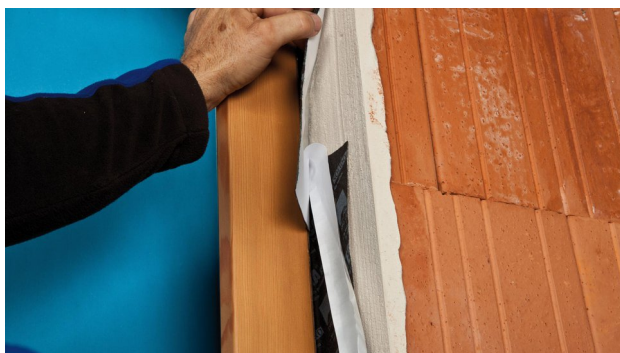
5. Install the window and insulate the joint

Fold in the CONTEGA SOLIDO EXO and install the window professionally.
Use a suitable fastening system.
Fill in the joint with a suitable approved insulation material leaving no cavities.



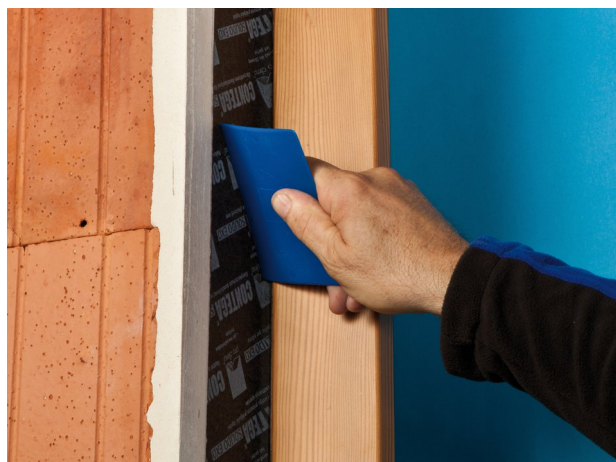
6. Stick to the soffit

Remove the backing paper strip and stick the tape in place around the circumference of the soffit.



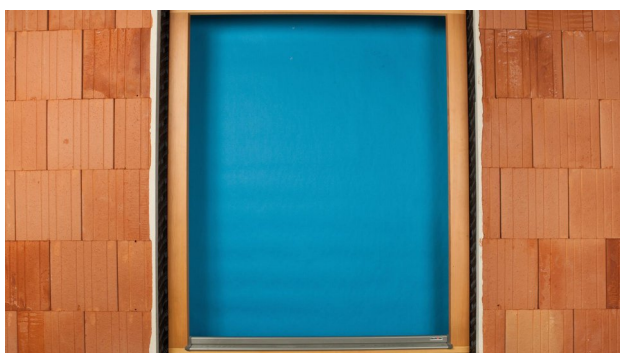
7. Stick the corners

Stick the ends of the tape to the soffit in a manner that is windtight, waterproof and resistant to driving rain.



8. Rub on

Rub the tape around the circumference using the pro clima PRESSFIX application tool to secure it.



9. You're finished

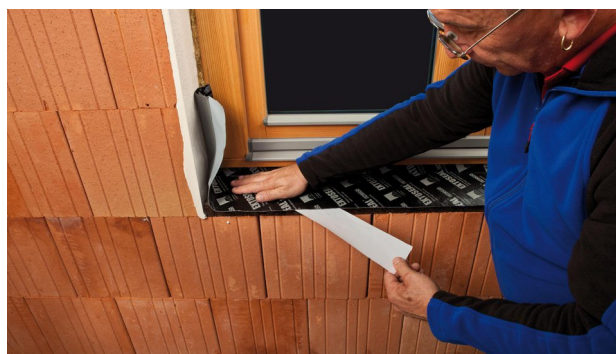
You now have a completed windproof and rainproof joint, and the tape can be plastered over.

Installation steps: 2. Window already installed



1. Window in masonry structure

Window has already been installed, CONTEGA SOLIDO EXO is to be installed subsequently.



2. Create a window sill

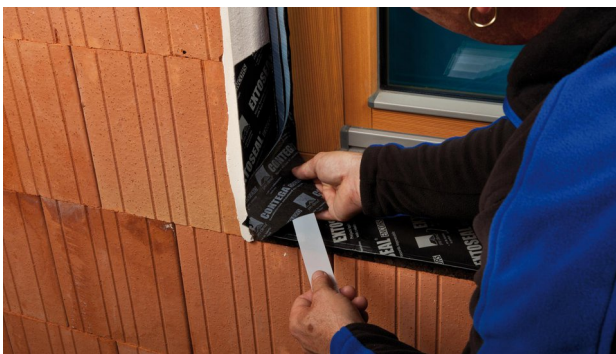
First create a window sill as a second, waterproof layer using the EXTOSEAL ENCORS sealing adhesive tape. Guide the tape into the corners precisely and also stick it to a height of 20 cm on the soffit on each side.



3. Cut the window sealing tape CONTEGA SOLIDO EXO
Add approx. 4 cm to the height of the frame and cut this length of tape.



4. Stick to the frame
Remove the narrow backing paper strip.
Put the CONTEGA SOLIDO EXO in place using the full width of the adhesive strip and allowing for an excess of 2 cm beyond the corner of the frame.
Stick the excess tape to the adjacent soffit side.



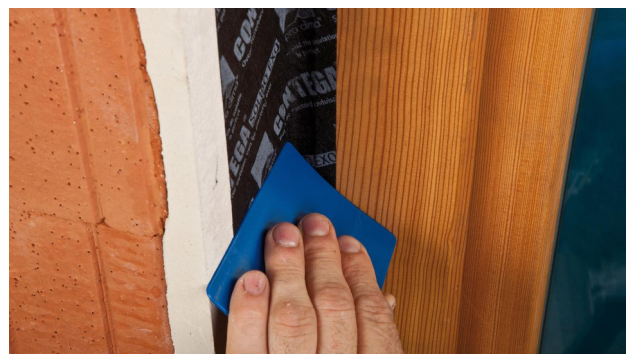
5. Stick to the window sill
Put the tape in place on the window sill and stick it.



6. Stick to the soffit allowing for slack
Remove the backing paper strip and gradually stick the tape in place on the soffit.
Leave slack for expansion so as to allow for relative motion between components.
Stick the tape to the window sill.



7. Stick the corners and around the circumference of the window
Continue sticking the entire window (frame and soffit) in the same manner.
Ensure that the corners are stuck over.



8. Rub on
Press firmly to secure the adhesive tape.
This work can be carried out more efficiently and in a manner that is kinder to your hands by using the pro clima PRESSFIX application tool.



9. You're finished

You now have a completed windproof and rainproof joint.

Substrates

Clean substrates before sticking.

Uneven mineral substrates may need to be levelled with a smooth finish.

Adhesion to frozen surfaces is not possible. There must be no water-repellent substances (e.g. grease or silicone) on materials to be bonded.

The width of the adhesive tape that is to be plastered over should generally not exceed 60 mm (2 3/8") or 50% of the soffit area. Detailed recommendations can be obtained from the relevant plaster producer.

Subsurfaces must be sufficiently dry and stable.

Permanent adhesion is achieved on all pro clima interior membranes and on other vapour retarder and airtight membranes (e.g. those made of PE, PA, PP and aluminium). Adhesion can be carried out on planed and painted wood, hard plastics, hard wood-based panels (chipboard, OSB and plywood panels), metal (e.g. pipes, windows etc.) and on mineral substrates such as concrete and masonry.

The best results in terms of structural stability are achieved on high-quality substrates.

It is your responsibility to check the suitability of the substrate; adhesion tests are recommended in certain cases.

Pretreatment with TESCON PRIMER is recommended in the case of substrates with insufficient stability.

General conditions

The bonds should not be subjected to tensile strain.

Press firmly to secure the adhesive tapes in place. Ensure that there is sufficient resistance pressure.

Seals that are windproof and resistant to driving rain can only be achieved if the sealing tape is installed free of folds and breaks.

When plastering, please observe the recommendations of the plaster manufacturer for non-absorbent substrates. A bonding course may be necessary.

The information provided here is based on practical experience and the current state of knowledge. We reserve the right to make changes to the recommended designs and processing or to make alterations due to technical developments and associated improvements in the quality of our products. We would be happy to inform you of the current technical state of the art at the time you use our products.

Further information about the application and construction can be found in the pro clima planning documentation. For queries please call the pro clima technical hotline on +49 (0)6202 278245.

MOLL

bauökologische Produkte GmbH

Rheinalstraße 35 - 43

D-68723 Schwetzingen

Fon: +49 (0) 62 02 - 27 82.0

eMail: info@proclima.de