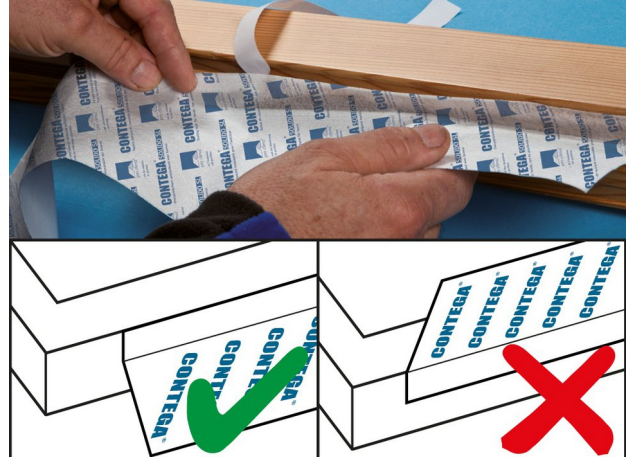


Installation steps: 1. Before the window is installed



1. Masonry structure

CONTEGA SOLIDO SL is to be fitted before the window is installed.
The frame is laid out flat.
The interior side is facing up.



2. Stick to the side of the frame

Remove the narrow backing paper strip, position it on the side of the frame flush with the frame edge and then gradually stick in place.
The fleece side of the tape must be facing upwards here.



3. Corner finishing

Fold CONTEGA SOLIDO SL in the corner areas, as shown.
Remove the narrow backing paper and stick the tapes to one another.
Ensure that there is uninterrupted airtightness for the joint between the tapes.



4. Stick the tape to the circumference of the frame

Stick to the side of the frame around its circumference.
When finished, cut the tape with approx. 5 cm of an overlap and stick this onto the other end of the tape.
Rub tape firmly into place using the pro clima PRESSFIX.



5. Install the window and insulate the joint

Fold in the CONTEGA SOLIDO SL and install the window professionally.
Use a suitable fastening system.
Fill in the joint with a suitable approved insulation material leaving no cavities.



6. Stick to the soffit and rub on

Remove the wide backing paper and gradually stick around the circumference of the soffit.
Rub tape firmly into place using the pro clima PRESSFIX.

Installation steps: 2. Window already installed



1. Window in masonry structure

Window has already been installed, CONTEGA SOLIDO SL is to be installed subsequently.



2. Cut the tape to length

Add approx. 4 cm (1 5/8") to the height of the frame and cut this length of CONTEGA SOLIDO SL.



3. Remove the first backing paper strip

Remove approx. 5 - 10 cm (2" - 4") of the narrow backing paper strip on the membrane side (smooth side).



4. Stick to the frame

Begin to carry out the sticking in the corner area. First position approx. 2 cm (7/8") of the tape on the horizontal part of the frame and stick the adhesive strip to the frame. Guide the tape around the frame corner and stick the tape to the vertical part of the frame. Gradually remove the backing paper while doing so.



5. Stick to the soffit

Gradually remove the second (wide) backing paper strip from the smooth membrane side.

Begin to carry out the sticking to the soffit in the corner area.

Stick the excess tape to the adjacent soffit side.

Stick the tape into the next corner area.

Stick the excess tape to the adjacent soffit side.



6. Press firmly

Press the tape to the frame and soffit using the pro clima PRESSFIX application tool to secure it.

Tip:

The width of the application tool can be adapted as needed.



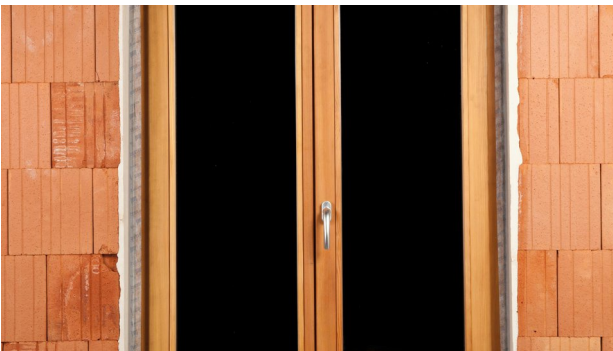
7. Stick the corners

Install the tape with an overlap of at least 2 cm (7/8") in the corner areas. Ensure that the bonding has uninterrupted windtightness at the window and at the masonry.



8. Stick around the circumference of the window

Carry out sticking around the circumference of the window in this way (frame and soffit). Rub tape firmly into place using the pro clima PRESSFIX.



9. You're finished!

The airtight joint is now complete, and the tape can be plastered over.

Installation steps: Other situations



A – Joints between membrane and masonry wall

Put the vapour retarder in position.
 Leave slack for expansion so as to allow for relative motion between components.
 Remove all backing papers from CONTEGA SOLIDO SL.
 Put the tape in place, gradually stick it.
 Rub tape firmly into place using the pro clima PRESSFIX.



B1 – Angular penetrations in masonry / concrete

Remove the narrow backing paper and stick the tape to the first side of the beam.
 Remove the wide backing paper and stick the tape to the wall.
 Cut into the tape at the beam corners so that the tape can be stuck to the adjacent beam side.
 Bond the other sides analogously in an airtight manner.



B2 – Rub on

Rub tape firmly into place using the pro clima PRESSFIX.

Substrates

Clean substrates before sticking.

Uneven mineral substrates may need to be levelled with a smooth finish.

Adhesion to frozen surfaces is not possible. There must be no water-repellent substances (e.g. grease or silicone) on materials to be bonded.

The width of the adhesive tape that is to be plastered over should generally not exceed 60 mm (2 3/8") or 50% of the soffit area. Detailed recommendations can be obtained from the relevant plaster producer.

Subsurfaces must be sufficiently dry and stable.

Permanent adhesion is achieved on all pro clima interior membranes and on other vapour retarder and airtight membranes (e.g. those made of PE, PA, PP and aluminium). Adhesion can be carried out on planed and painted wood, hard plastics, hard wood-based panels (chipboard, OSB and plywood panels), metal (e.g. pipes, windows etc.) and on mineral substrates such as concrete and masonry.

The best results in terms of structural stability are achieved on high-quality substrates.

It is your responsibility to check the suitability of the substrate; adhesion tests are recommended in certain cases.

Pretreatment with TESCON PRIMER is recommended in the case of substrates with insufficient stability.

General conditions

The bonds should not be subjected to tensile strain.

Press the adhesive tapes firmly to secure them, taking care to ensure that there is sufficient resistance pressure behind them.

Airtight seals can only be achieved if the sealing tape is installed free of folds and breaks. Ventilate regularly and systematically to prevent build-up of excessive humidity. Use a dryer if necessary.

When plastering, please observe the recommendations of the plaster manufacturer for non-absorbent substrates. A bonding course may be necessary.

The information provided here is based on practical experience and the current state of knowledge. We reserve the right to make changes to the recommended designs and processing or to make alterations due to technical developments and associated improvements in the quality of our products. We would be happy to inform you of the current technical state of the art at the time you use our products.

Further information about the application and construction can be found in the pro clima planning documentation. For queries please call the pro clima technical hotline on +49 (0)6202 278245.

MOLL

bauökologische Produkte GmbH

Rheintalstraße 35 - 43

D-68723 Schwetzingen

Fon: +49 (0) 62 02 - 27 82.0

eMail: info@proclima.de