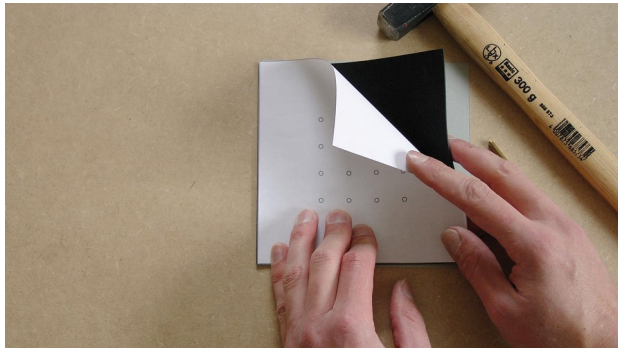


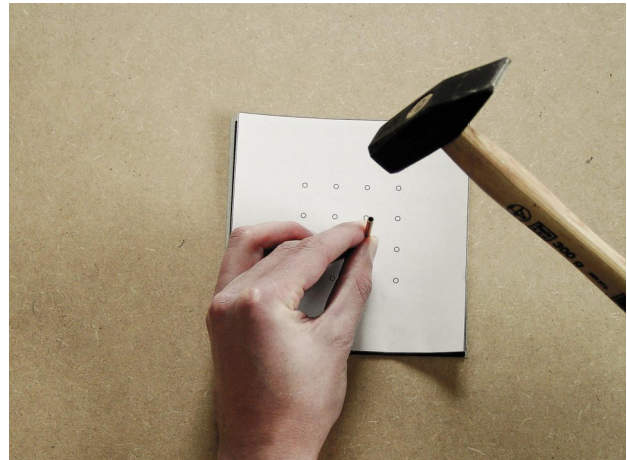
# Installation instructions **KAFLEX multi**

## Installation steps



### 1. Align the underlay, EPDM and template

Place the EPDM grommet on a cardboard underlay, put the template in place and align it.



### 2. Punch out holes

Punch out the required number of holes using the copper tube and hammer that are supplied.

Please note:

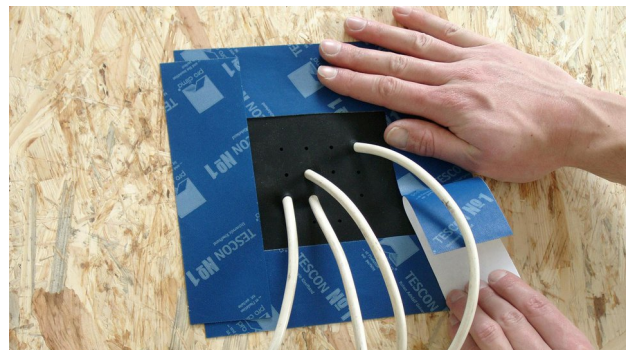
punching must be carried out on a subsurface that does not have to be protected against damage.

The cardboard base does not provide sufficient protection for surfaces that are easily damaged.

3. Pull cables through

### 3. Pull cables through

Pull cables with diameters of 4.8 - 12 mm (3/16"-1/2") through the holes that have been created in the EPDM grommet.



### 4. Stick the grommet

Guide the grommet so that it rests flat on the subsurface to be sealed, clean the subsurface and then stick using TESCO VANA.

Press firmly to secure the adhesive tape.

You're finished!

Use of the 'ROFLEX 20 multi' multi-grommet for empty pipes is recommended if a number of empty pipes are to be reliably integrated into the airtightness layer.

## Substrates

Clean subsurfaces before sticking.

Adhesion to frozen surfaces is not possible. There must be no water-repellent substances (e.g. grease or silicone) on materials to be bonded. Subsurfaces must be sufficiently dry and stable.

Permanent adhesion is achieved on all pro clima interior and exterior membranes, other vapour retarder and airtight membranes (e.g. those made of PE, PA, PP and aluminium) as well as other roof and wall lining membranes (e.g. those made of PP and PET).

Bonding and joints are possible on planed and painted wood, hard plastics and metal (e.g. pipes, windows etc.), hard wood-based panels (chipboard, OSB, plywood, MDF and wood fibre underlay panels).

Pretreatment with TESCO PRIMER is required in the case of adhesion to wood-fibre underlay panels and smooth mineral subsurfaces. Concrete or plaster subsurfaces must not be sandy or crumbling.

The best results in terms of structural stability are achieved on high-quality subsurfaces.

It is your responsibility to check the suitability of the subsurface; adhesion tests are recommended in certain cases.

Pretreatment with TESCO PRIMER is recommended in the case of subsurfaces with insufficient stability.

## General conditions

The bonds should not be subjected to tensile strain.

Press firmly to secure the adhesive tapes in place. Ensure that there is sufficient resistance pressure.

Windproof, airtight or rainproof bonding can only be achieved on vapour retarders, roof underlays or wall lining membranes that have been laid without folds or creases.

Ventilate continuously and systematically to prevent build-up of excessive humidity; use a dryer if necessary.

---

The information provided here is based on practical experience and the current state of knowledge. We reserve the right to make changes to the recommended designs and processing or to make alterations due to technical developments and associated improvements in the quality of our products. We would be happy to inform you of the current technical state of the art at the time you use our products.

Further information about the application and construction can be found in the pro clima planning documentation. For queries please call the pro clima technical hotline on +49 (0)6202 278245.

### MOLL

**bauökologische Produkte GmbH**

Rheintalstraße 35 - 43

D-68723 Schwetzingen

Fon: +49 (0) 62 02 - 27 82.0

eMail: [info@proclima.de](mailto:info@proclima.de)