

# Installation instructions **ROFLEX 20 multi**

## Installation steps



### 1. Preparation

Subsurfaces must have sufficient stability and be dry, level and free of dust, silicone and grease.

Brush off subsurfaces; if necessary, clean with a vacuum cleaner and wipe down.



### 2. Put the template in place

Remove the installation set from its plastic packaging.

Place the EPDM grommet on a cardboard underlay.

Put the punching template in place and align it to the EPDM so that the edges are aligned.



### 3. Punch holes

Punch the required number of holes with a round punch and a hammer at the markings on the template.

Note:

The subsurface can be damaged by the punching process.

If necessary, use a protective layer.



### 4. Guide the conduits through

Gradually pull the tubes through the grommet.

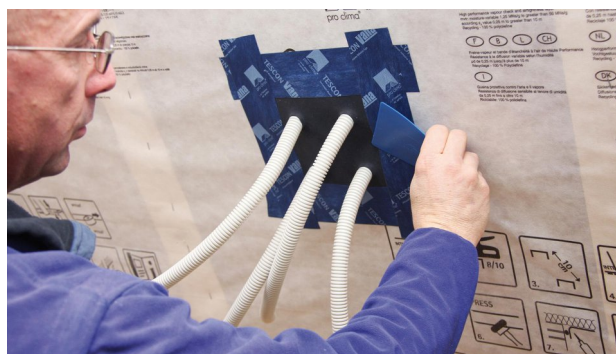
Guide the grommet so that it rests flat on the subsurface to be sealed and align it in place.



### 5. Stick the grommet

Stick the grommet around its perimeter using the TESCON VANA system adhesive tape.

Centre the tape and ensure that there is sufficient resistance pressure. Ensure that the overlaps are waterproof underlay areas (first carry out adhesion at the bottom, then at the left and right, and finally at the top).



### 6. Rub in place

As a final step, rub all adhesive strips firmly in place.

This work can be carried out more efficiently and in a manner that is kinder to your hands by using the pro clima PRESSFIX application tool. You're finished!

## Substrates

Clean subsurfaces before sticking.

Adhesion to frozen surfaces is not possible. There must be no water-repellent substances (e.g. grease or silicone) on materials to be bonded. Subsurfaces must be sufficiently dry and stable.

Permanent adhesion is achieved on all pro clima interior and exterior membranes, other vapour retarder and airtight membranes (e.g. those made of PE, PA, PP and aluminium) as well as other roof and wall lining membranes (e.g. those made of PP and PET).

Bonding and joints are possible on planed and painted wood, hard plastics and metal (e.g. pipes, windows etc.), hard wood-based panels (chipboard, OSB, plywood, MDF and wood fibre underlay panels).

Pretreatment with TESCON PRIMER is required in the case of adhesion to wood-fibre underlay panels and smooth mineral subsurfaces. Concrete or plaster subsurfaces must not be sandy or crumbling.

The best results in terms of structural stability are achieved on high-quality subsurfaces.

It is your responsibility to check the suitability of the subsurface; adhesion tests are recommended in certain cases.

Pretreatment with TESCON PRIMER is recommended in the case of subsurfaces with insufficient stability.

## General conditions

The bonds should not be subjected to tensile strain.

Press firmly to secure the adhesive tapes in place. Ensure that there is sufficient resistance pressure.

Windproof, airtight or rainproof bonding can only be achieved on vapour retarders, roof underlays or wall lining membranes that have been laid without folds or creases.

Ventilate continuously and systematically to prevent build-up of excessive humidity; use a dryer if necessary.

---

The information provided here is based on practical experience and the current state of knowledge. We reserve the right to make changes to the recommended designs and processing or to make alterations due to technical developments and associated improvements in the quality of our products. We would be happy to inform you of the current technical state of the art at the time you use our products.

Further information about the application and construction can be found in the pro clima planning documentation. For queries please call the pro clima technical hotline on +49 (0)6202 278245.

### MOLL

**bauökologische Produkte GmbH**

Rheintalstraße 35 - 43

D-68723 Schwetzingen

Fon: +49 (0) 62 02 - 27 82.0

eMail: [info@proclima.de](mailto:info@proclima.de)